

ZOOMLION

ARTICULATING BOOM LIFT

ZA20J

Comply with ANSI/CSA Standard



HIGHLIGHTS

- ▶ 250/360kg platform capacity for higher efficiency
- ▶ Build-in multiple pressure control leveling system to enhance stability
- ▶ Precise load sensing system to improve overload safety operations
- ▶ Integrated with rotary reducer to enhance rotation stability
- ▶ Hostile Kits available for dusty working environment
- ▶ Deadweight Lowering System for smooth operation and energy efficiency
- ▶ Platform fast lifting function provides high-efficient performance without tower boom operation
- ▶ Lightweight design, low energy consumption

FEATURES

Standard Features

- Horn
- All motion alarm
- Proportional control
- Self-closing entry gate
- Flashing beacon
- Auto-leveling system
- Emergency stop button
- Over tilt protection system
- Emergency descent system
- On-board diagnostic system
- Oscillating axle
- 4.3' LED display
- Load sensing system
- Swing-out engine tray

Accessories & Options

- ▶ Platform work lights
- ▶ Anti-collision device
- ▶ AC power to platform

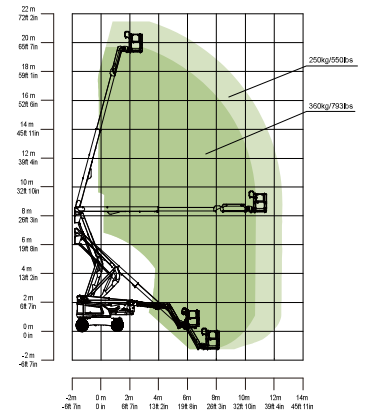
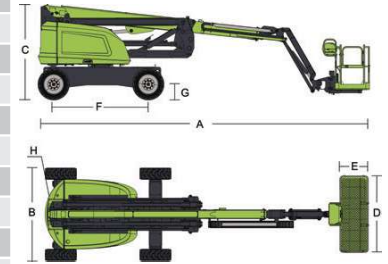
ACCESS WITH ZOOMLION GREEN

Phone: 0086(731)-88353692
E-mail: awp@zoomlion.com

Add: 701 Xulong Nan Lu, Xiangjiang New District, Changsha Hunan, China
Web: www.zoomlion-access.com

ZOOMLION

Model	ZA20J	
	Imperial	Metric
Size		
Work Height	70ft 1in	21.38m
Platform Height	63ft 7in	19.38m
Horizontal Outreach	40ft 4in	12.3m
Up and Over Height	27ft 1in	8.25m
A- Stowed Length	28ft 1.1in	8.82m
B- Stowed Width	8ft 1in	2.46m
C- Stowed Height	8ft 4in	2.52m
D- Platform Length	8/6ft	2.44/1.83m
E- Platform Width	3ft/2ft 6in	0.91/0.76m
Jib Length	5ft	1.53m
F- Wheelbase	8ft 3in	2.52m
G- Ground Clearance	1ft 5in	0.42m
Performance		
Platform Capacity	550 lb/793 lb	250kg/360kg
Drive Speed	3.79 mph	6.1km/h
Gradeability	45%(24°)	
Axles Oscillation	8in	0.2m
Turning Radius (inside)	8ft 3in	2.51m
Turning Radius (Outside)	17ft 11in	5.47m
Turntable Swing	360° continuous	
Platform Rotation	±90°	
H-Tail Swing	1ft 4in	0.4m
Max. Wind Speed	28mph	12.5m/s
Power		
Diesel Engine	Kubota V2403 36kw/2600rpm Kubota V2403 36.8kw/2700rpm(EU V)	
Fuel Tank Capacity	39.6 (us gal)	150L
Auxiliary Power	12V	
Control Voltage	12V	
Hydraulic System Capacity	42.3 (us gal)	160L
Hydraulic Tank Capacity	19.8 (us gal)	75L
Tire		
Type	33×12/D610 Foam-filled Tires	
Weight		
Gross	22046 lb	10000kg



Range of Motion ZA20J

ZOOMLION ACCESS reserves the right to make specification and/or equipment changes without prior notification. Product specifications are updated to January, 2025.