

# ZOOMLION TECHNOLOGY WITH INGENUITY AND CARE



**THE WORLD'S LEADING EXCAVATOR INTELLIGENT MANUFACTURING FACTORY**  
ZOOMLION Smart City Earthmoving Machinery Park is an industry-leading intelligent and flexible excavator factory. From a piece of steel plate to an excavator, with high-precision welding process, highly reliable assembly process, high-level coating process and strict quality control, each excavator is delivered with ultimate quality.

**ZOOMLION**

**Zoomlion Heavy Industry Science & Technology Co.,Ltd.**

Add: No.361, South Yinpen Road, Changsha, Hunan Province, P.R.China 410013  
Copyright©2024 Zoomlion. All rights reserved. Reproduction and copying of any part of contents is not allowed for any purposes without Zoomlion's approval.  
Note: Materials and specifications are subject to change without notice. Featured machines in photos may include additional equipment.

Email: earthmoving@zoomlion.com



# ZOOMLION 7.5-TONNAGE CRAWLER HYDRAULIC EXCAVATOR

**ZE75G**



**ZOOMLION**



**VISION  
CREATES  
FUTURE**



Engine power:  
**42.4 kW @ 2000 rpm**

Operating weight:  
**7500 kg**

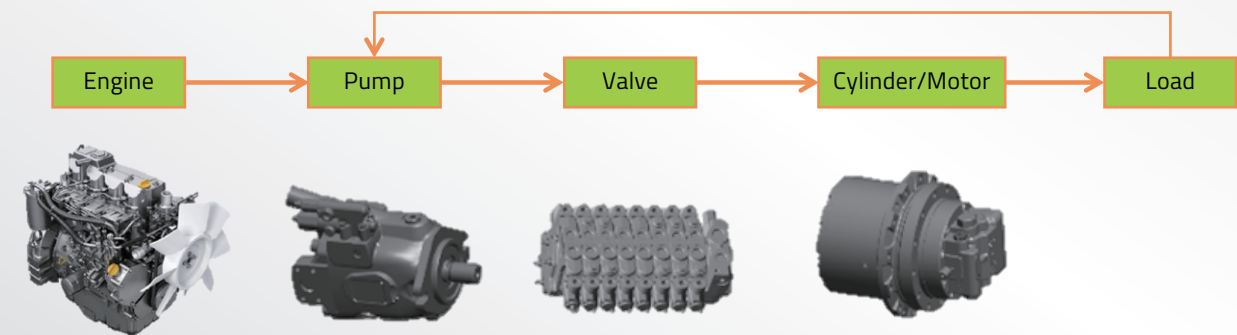
Standard bucket capacity:  
**0.3 m<sup>3</sup>**



# PRECISE CONTROL

## Customized load sensing system + electronically controlled pump

Perfect handling performance is achieved through load independent flow distribution technology. The action is more precise, operation is more flexible and response is faster.



### Engine control

Take speed and torque as the control target, making sure the engine is always work in the relatively economic range; Two-stage automatic idling technology is adopted to reduce fuel consumption.

### Pump control

Fuel consumption is reduced by refining the working modes and optimizing the matching strategy between power and load. Fuel consumption can be reduced by 5%.

### Actuator

Cylinder diameter and bucket capacity are optimized to increase digging speed.



### Wine glass stacking by excavator

Accurate flow distribution for multi-actuator variable load brings more coordinated simultaneous motions. Dynamic response matching between liquid resistance network and hydraulic system lowers motion impact. Perfect start and stop features of the pilot joysticks offer better micro-positioning control performance.

# SAFE AND COMFORTABLE



The cab is spacious with large area of glass surrounded. The light transmittance of the glass is greater than 51%. The cab is ROPS certified.



### 5.7 inch LCD screen

Brand new human-computer interactive operating system; lots of functions; simple and easy to use.



### Rearview camera

The rearview camera is optional. The rear view is clearly displayed on the monitor, so travel operation is safer.



### Ergonomics - Suspension Seat

Upgraded suspension seat to provide a more comfortable driving experience.

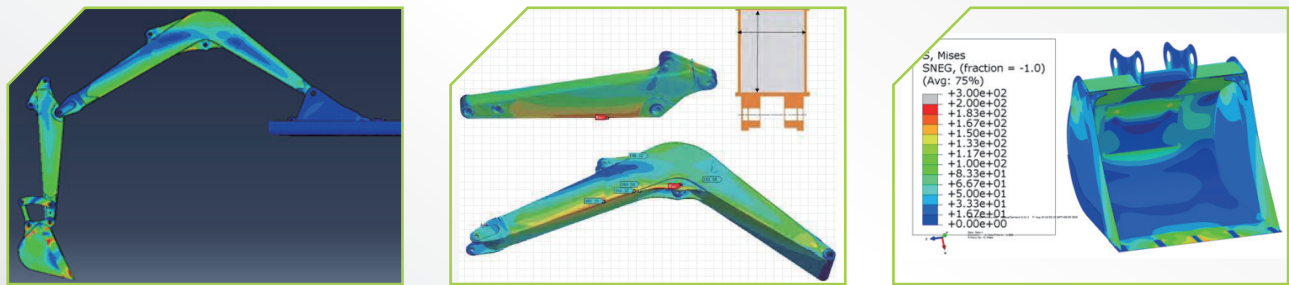


### Integrated silicone buttons

Silicone buttons and navigation knobs are positioned centralized, so the operation is more comfortable



# RELIABLE AND DURABLE



## Enhanced structural parts design

The boom and arm are formed in one body with large cross-section area. The key positions of the boom, arm, upper frame and lower frame are specially strengthened for higher bearing capacity to work in various harsh conditions.



## Carrier roller innovative design

The carrier roller is replaced by track roller. It's more firm and more durable being fixed at both ends.



# EASY MAINTENANCE

## Fully open design of rear hood + left and right doors

Maintenance space is large thanks to the fully open design of the rear hood, left and right doors. Places for inspection and maintenance can be seen at a glance, making maintenance more convenient.

## "One-stop" maintenance design

All maintenance can be easily completed on the ground, reducing maintenance time. Maintenance cost is low with upgraded maintenance parts.



Air cleaner



Fuel filter and oil filter



Grease barrel rack



Remote fuel drain valve

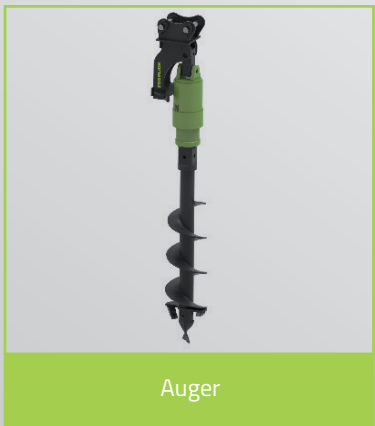


Pilot filter



# VERSATILE

Except the standard 0.3m³ reinforced bucket, there are trenching bucket, wide bucket and other attachments optional to make the machine be used for various applications.



Please contact with ZOOMLION for more available attachments.

# CUSTOMER SERVICE



Zoomlion's slogan is "Vision creates future". It is not just a simple slogan, but an unshakable determination to exceed our customer's expectations. Zoomlion has always upheld this belief and tries to implement it in everything that we do for customers. The service we offer to customers is to think about what they think about and worry about what they worry about.

Zoomlion promises that once you choose us, we are ready to respond with the first arrival and solution any time, anywhere.

Various service content, professional service teams, global service networks and systematic technical support are readily available from Zoomlion for an effective response and solution upon your request no matter where you are in the world and what time it is.

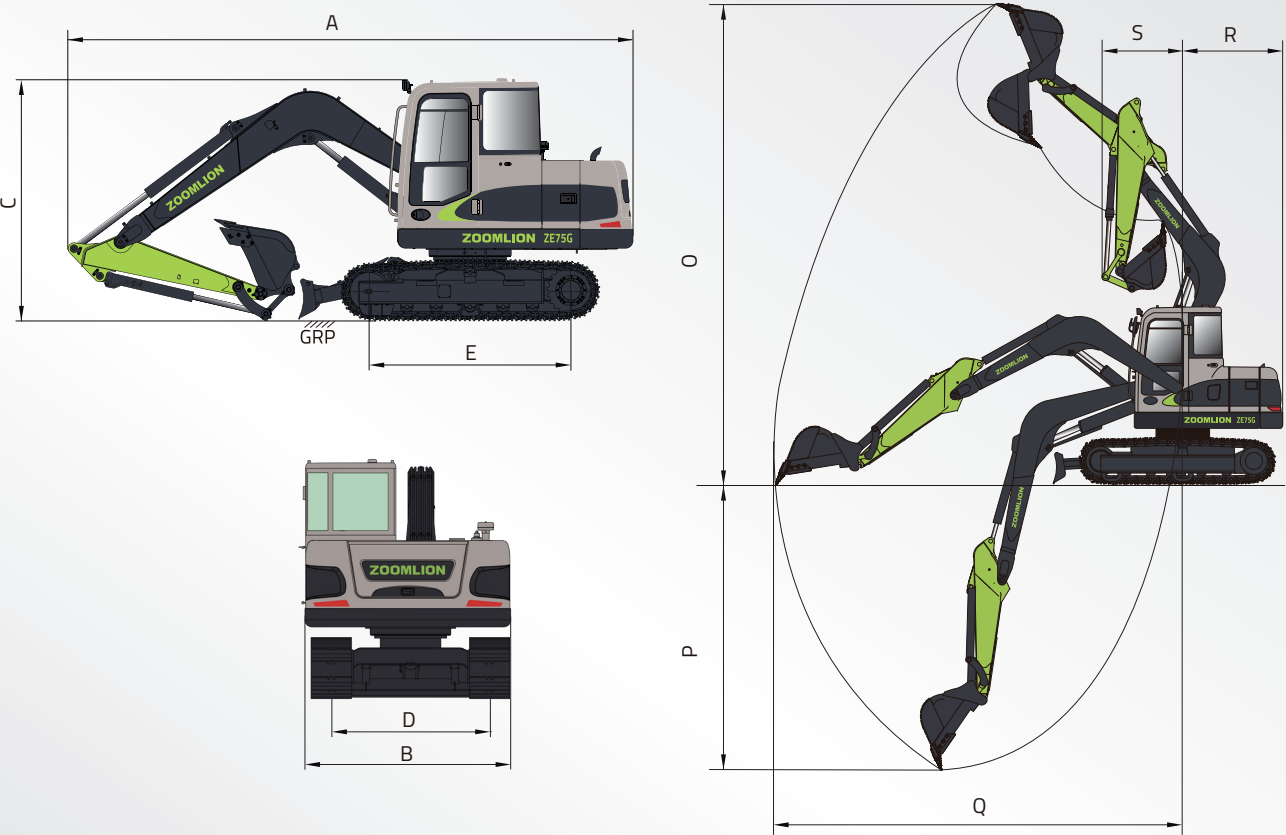




# TECHNICAL SPECIFICATIONS

	ZE75G
ENGINE	
Brand	Yanmar
Model	4TNV98C
Rated power	42.4 kW@2000 rpm
Emission standards	EPA T4F / EU Stage V
Displacement	3.319 L
HYDRAULIC SYSTEM	
Main pump	Swash plate variable displacement piston pumps Maximum flow: 163.8 L / min
Maximum pressure - Equipment	29 MPa
Maximum pressure - Swing	22.6 MPa
Maximum pressure - Travel	29 MPa
Maximum pressure - Pilot system	3.5 MPa
UPPER FRAME	
Maximum swing speed	11 r/min
Maximum swing torque	19 kN·m
UNDERCARRIAGE	
Number of carrier rollers (each side)	1(Two sides supported track rollers)
Number of track rollers (each side)	5
Number of track guard (each side)	2
Travel speed (high)	4.8 km/h
Travel speed (low)	2.9 km/h
Maximum drawbar pull	64.3 kN
Gradeability	70%
SERVICE REFILL CAPACITIES	
Fuel tank	172 L
Engine coolant	14 L
Engine oil	10.2 L
Final drive (each side)	2.5 L
Hydraulic system	80 L
Hydraulic tank	106 L
WORK EQUIPMENT	
Boom length	3720 mm
Arm length	1620 mm
Digging force of bucket	56kN
Digging force of arm	38kN

	ZE75G
OVERALL DIMENSIONS	
A Overall length	6149mm
B Overall width	2346mm
C Overall height	2650mm
D Track gauge	1750mm
E Length of track on ground	2200mm
WORKING RANGE	
O Maximum digging height	7003mm
P Maximum digging depth	4046mm
Q Maximum digging reach	6270mm
R Tail swing radius	1775mm
S Minimum front swing radius	1750mm





STANDARD & OPTIONAL FEATURES

Category	Features	ZE75G
Powertrain	Air cleaner	●
	Swirl type air pre-cleaner	●
Hydraulic system	Boom cylinder hose burst valve	●
	Arm cylinder hose burst valve	●
	Hammer plumbing	●
	Attachment plumbing	●
Cab	Quick coupler plumbing	●
	ROPS	●
	Top guard	○
	Fire extinguisher	●
	Mechanical suspension seat	●
	Air condioner	●
	Sunshade curtain	○
Lower structure	Multifunctional joystick	●
	450mm track	●
	600mm track	○
	Rubber track pad, width 450mm	○
Electrical system	Audible and visual alarm	●
	Emergency stop	○
	12V DC outlets	●
	Cab front lamp	● 2 pcs
	Boom lamp	● 1 pc
	Upper frame lamp	● 1 pc
	Refueling pump	○
	GPS	●
	AM/FM radio	●
	Rearview camera	○
Bucket	0.3m³ reinforced bucket, width 780mm	●
	0.1m³ trenching bucket, width 400mm	○
	0.14m³ trenching bucket, width 480mm	○
	0.32m³ earth bucket, width 880mm	○
	0.4m³ mud bucket, width 150mm	○
Attachment	Side-mounted hammer	○
	Top-mounted hammer	○
	Hydraulic quick coupler	○
	Mechanical quick coupler	○
	Tilt mud bucket	○
	Auger (with 300mm drill bit)	○
	Auger extension rod (800mm)	○
	Auger bit, 400mm	○
Other	Cab rear mirror	● 1 pc

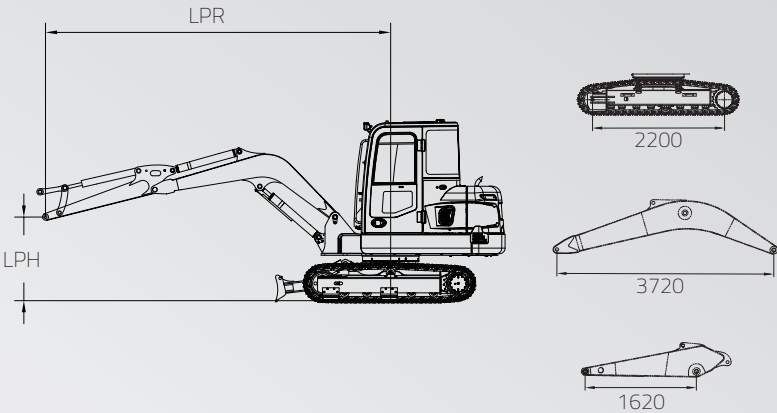
● Standard    ○ Optional

LIFT CAPACITY



Do not attempt to lift or hold any load that is greater than these rated values at their specified lift-point radius and height.

The lift point is located at the centreline of the bucket pivot mounting pin on the arm.



LPH	Rated lift capacity (kg)								
	LPR								
	3.0m		4.0m		5.0m		Maximum LPR		
m	End	Side	End	Side	End	Side	End	Side	m
6.0	*1310	*1310							
4.5	*2260	*2260	*1410	*1410			*980	*980	4.39
3.0	*1870	*1870	*1630	*1540	1290	1030	*980	970	5.16
1.5	*2830	2190	1770	1400	1230	970	1070	840	5.42
0	2640	2010	1660	1290	1170	920	1080	850	5.24
-1.5	2600	1970	1630	1270			1330	1040	4.58
-3.0	*2460	2080					*2320	1940	3.14

Capacities marked with an asterisk (\*) are limited by hydraulic capacities. See Note 1.

- The mass of slings and any auxiliary lifting devices shall be deducted from the rated load to determine the net load that may be lifted.
- Lift capacities are based on the machine standing on a firm, uniform supporting surface. The user shall make allowances for job conditions such as soft or uneven ground.
- The operator should be fully acquainted with the Operator’s Manual and the Operating Safety Manual furnished by the manufacturer before operating the machine.

- NOTE 1 Lift capacities shown do not exceed 75% of minimum tipping loads or 87% of hydraulic capacities.
- NOTE 2 The least stable position is over the side.
- NOTE 3 Lift capacities apply only to the machine as originally manufactured and normally equipped by the manufacturer.
- NOTE 4 The total mass of the machine is 7500kg. Included in this mass are 450mm triple grouser shoes, 3.72m boom, 1.62m arm, 582.5kg counterweight, all operating fluids and a 75kg operator.
- NOTE 5 Lift capacities are in compliance with ISO 10567:2007.



**VISION  
CREATES  
FUTURE**

